

GALERIE  
HEIKE  
STRELOW



George Steinmann

## MINDMAPS. A Poetic Cosmos

Exhibition catalog





George Steinmann

**MINDMAPS | A Poetic Cosmos**

24 October 2025 – 5 December 2025

## **MINDMAPS. A Poetic Cosmos**

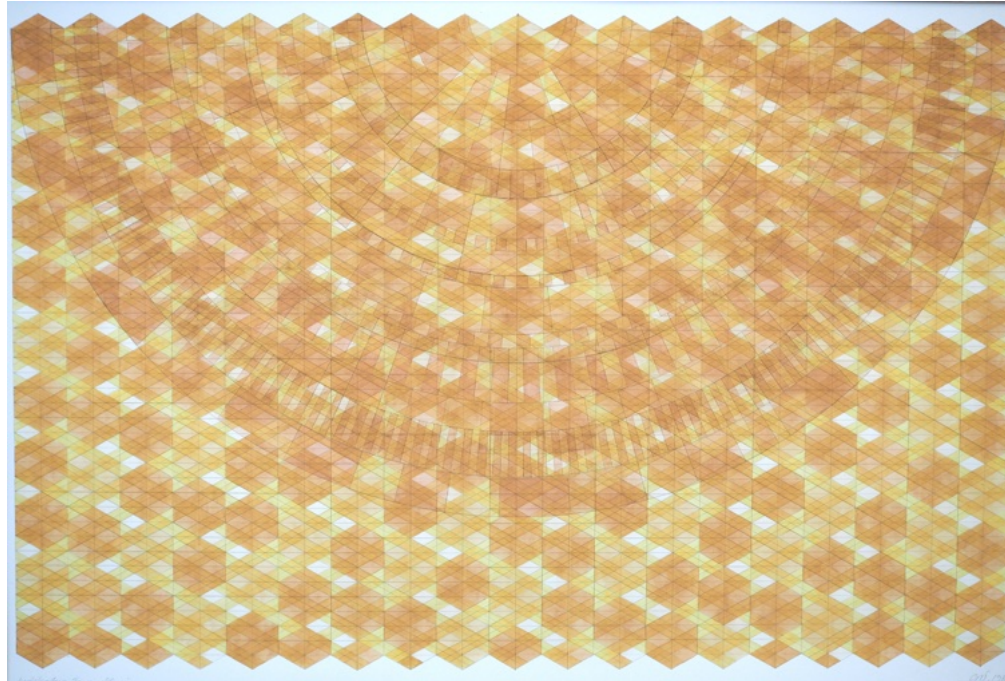
The exhibition continues the gallery's long collaboration with George Steinmann. His work opened the gallery in 2007. You see an artist who links aesthetic thought with social responsibility. His Mindmaps bring together knowledge, perception and material. They show how art, science and spirituality form a poetic cosmos that looks at the state of the planet.

George Steinmann, born in Bern in 1950, studied painting, music and Afro-American studies in Basel and San Francisco. Since 1979 he has presented exhibitions, performances and transdisciplinary projects across the world. His work appeared at Pori Art Museum, Zentrum Paul Klee Bern, Helmhaus Zürich, LACE Los Angeles, Kunstmuseum Thun, the ERES Foundation Munich, Taxispalais Innsbruck, the Art Gallery of Ontario Toronto, the Museum of Contemporary Art Helsinki and the Kunstmuseum Solothurn. He received the Meret Oppenheim Art Award from the Swiss Federal Office of Culture. The University of Bern awarded him an honorary doctorate in 2011 for his contribution to dialogue between art, science and ethics.

The Mindmaps form the core of his practice. You encounter titles such as *The Art of Collaboration*, *Raising Public Awareness* or *Other Sources*. Each work mixes writing, lines, glazes and natural pigments. These elements create a network of thoughts, colours and chemical processes. Steinmann uses berries, minerals and spring water. He collects, presses and extracts them himself. The pigments carry colour, energy and memory. They hold forms of knowledge that you read through the materials. The Mindmaps act as notes, research fields and poetic zones. They address sustainability, cultural memory and ecological balance. They show how art can generate insight through the meeting of matter and mind. Steinmann treats his practice as a tool of knowledge equal to the natural and human sciences.

The exhibition marks the publication of *Mindmaps* by Hirmer Verlag Munich, edited by Katrin Sperry and Isabel Zürcher.





George Steinmann

1988

Indikator. Feng-Shui.

Fern juice (Polystichum), Watercolor (Naples yellow), pencil on  
handmade paper

60 x 90 cm

Frame size 80 x 110 cm



George Steinmann

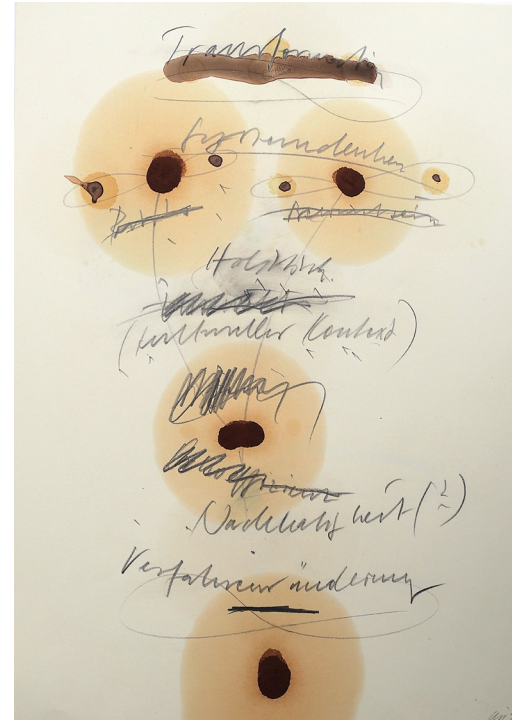
1997 / 2017

Äusserer Raum-Innerer Raum

Blueberry juice, indigo, shellac, rhatany essence, ballpoint pencil,  
pencil

28.8 x 19.8 cm

Frame size 40 x 30 cm



George Steinmann

1996

Transformation

Spring substance, linseed oil, blueberry juice, pencil on second  
sheet with linseed oil and pencil

29.7 x 21 cm

Frame size 40 x 30 cm



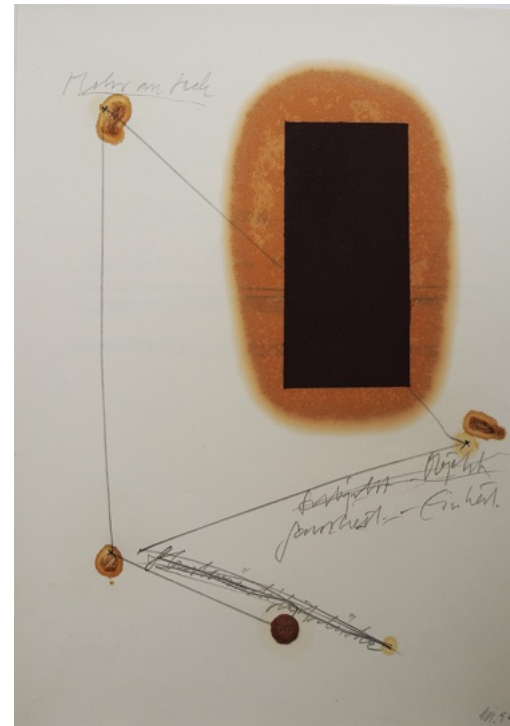
George Steinmann  
1997

Labile Ästhetik

Spring substance, linseed oil, dust, glue, sage essence, pencil on  
second sheet with blueberry juice, antiseptic, and pencil

29.7 x 21 cm

Frame size 40 x 30 cm



George Steinmann  
1996

Transformation

Spring substance, linseed oil, blueberry juice, pencil on second  
sheet with linseed oil and pencil

29.7 x 21 cm

Frame size 40 x 30 cm





George Steinmann  
2018

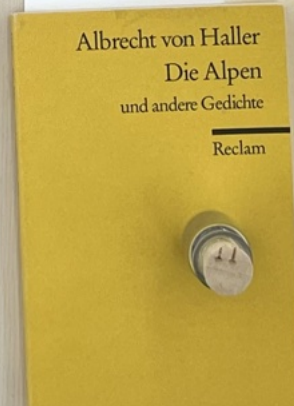
Resonance (Relationality, Adaptability, Humility, Mitigation)  
Blueberry juice, blackberry juice (2001), indigo, shellac, rhatany  
essence, ballpoint pencil, pencil, colored pencil

29.7 x 21 cm

Frame size 50 x 40 cm



George Steinmann  
2024  
The Soul of Remedies  
Mixed media  
300 x 100 cm





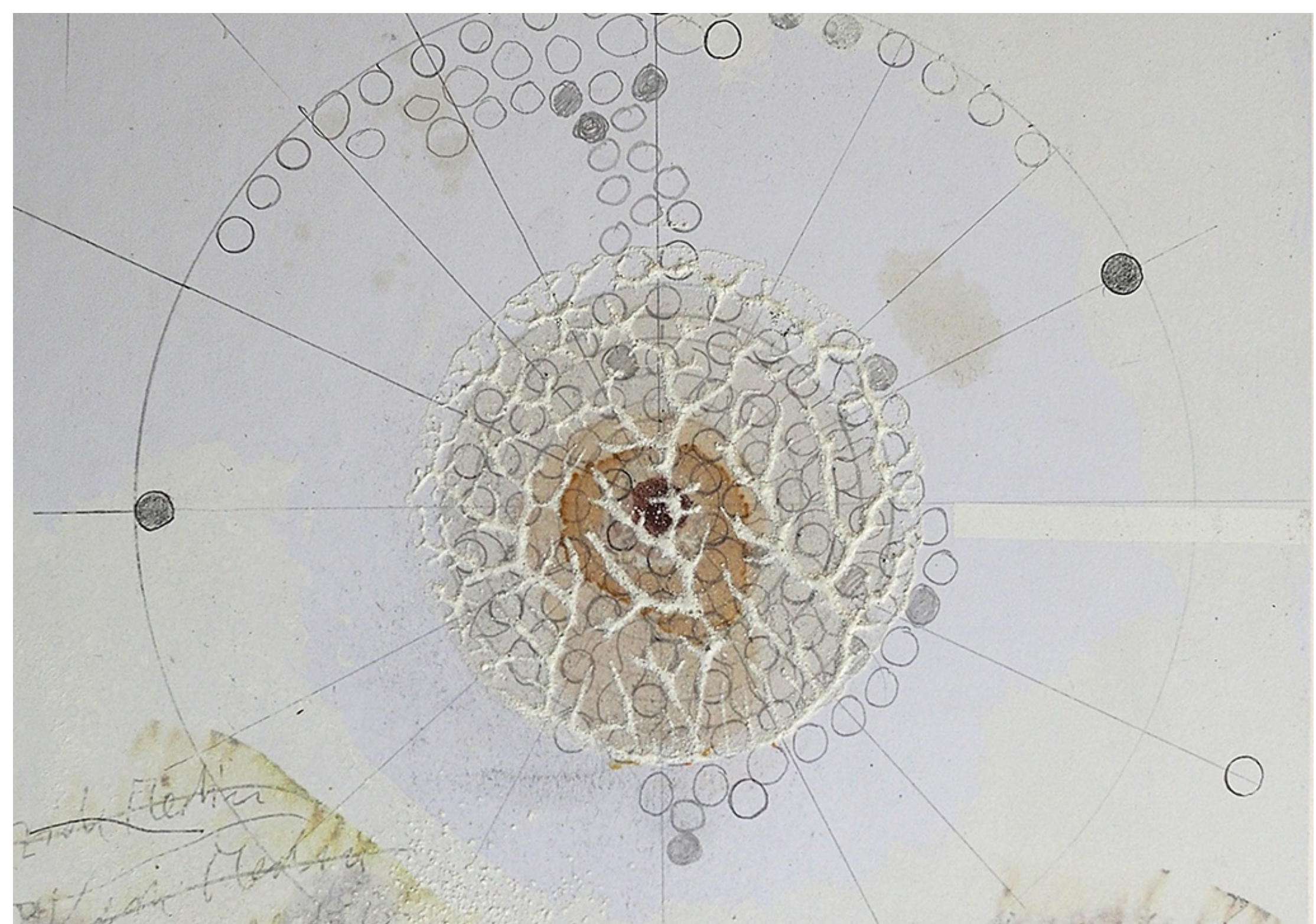
George Steinmann  
2021

Ethik und das Flüchtige (Aquapunktur)

Pencil, marker, correction tape, spring substance, shellac, calcium  
hydroxide

25.8 x 18.5 cm

Frame size 40 x 30 cm



Handwritten text in the bottom-left corner, partially obscured by a yellowish stain. The text is written in a cursive or script style and appears to be a name or a label, possibly "F. H. H. H." or similar, followed by a horizontal line and another line of text.



George Steinmann  
2020

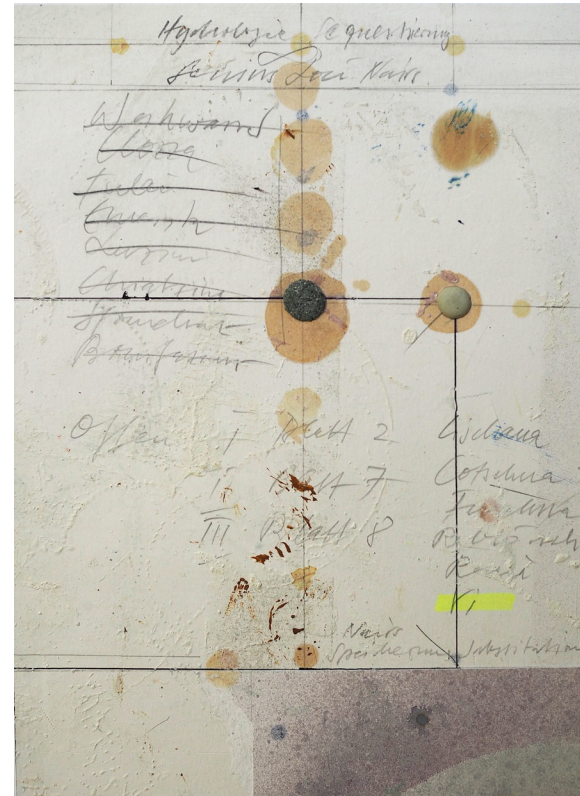
Am Sitz der Mächtigen Platz nehmen.

Indigo, spring substance, calcium hydroxide, shellac, ballpoint pencil, marker

29.7 x 21 cm

€2,675.00 Price with tax

Frame size 40 x 30 cm



George Steinmann  
2012

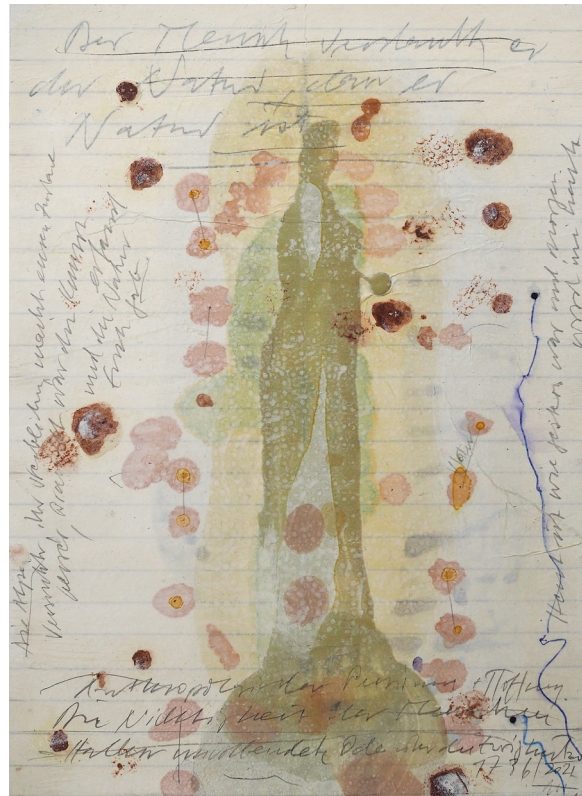
Genius Loci Nairs

Pencil, ballpoint pencil, AION A powder, rhatany essence, spring substance, shellac, calcium hydroxide, serpentinite, Oregon grape, marker on paper produced with water from the Carola mineral

spring, Tarasp

25.8 x 18.5 cm

Frame size 40 x 30 cm



George Steinmann

2020 / 2021

Der Mensch verdankt es der Natur, dass er Natur ist  
Spring substance, shellac, rhatany essence, calcium hydroxide,  
ballpoint pencil, pencil on fleese on paper produced with water  
from the Carola mineral spring, Tarasp

25 x 18.5 cm

Frame size 40 x 30 cm



George Steinmann

2017

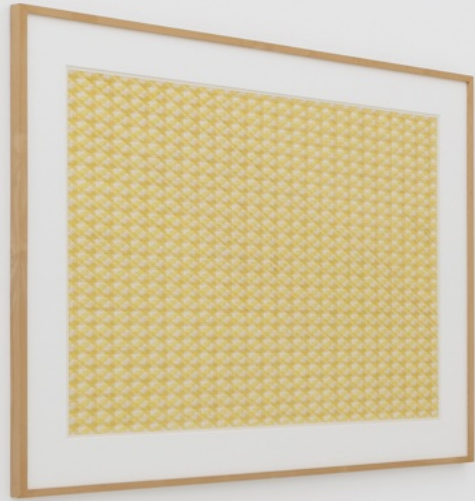
Toxic Silence

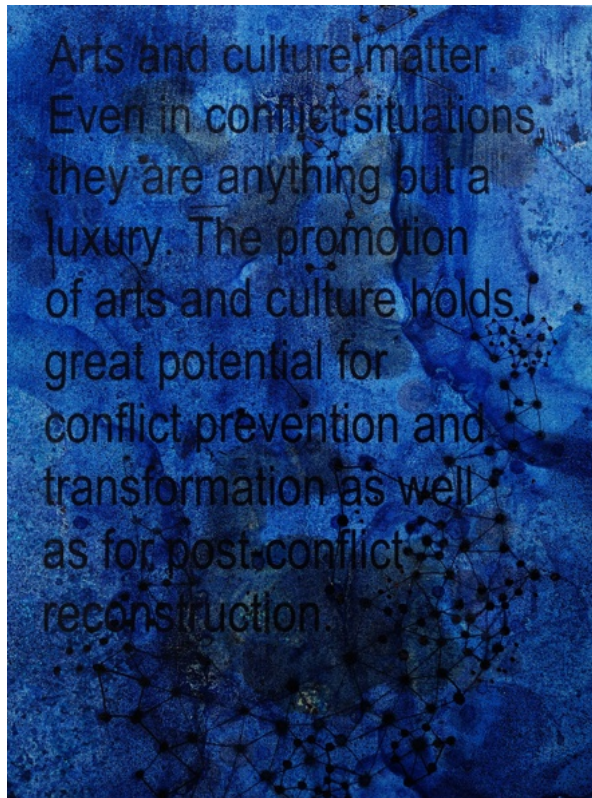
Blueberry juice, indigo, ballpoint pencil, shellac, calcium hydroxide  
on lithograph by GST

29.8 x 21 cm

Frame size 50 x 40 cm







George Steinmann

2016 / 2022

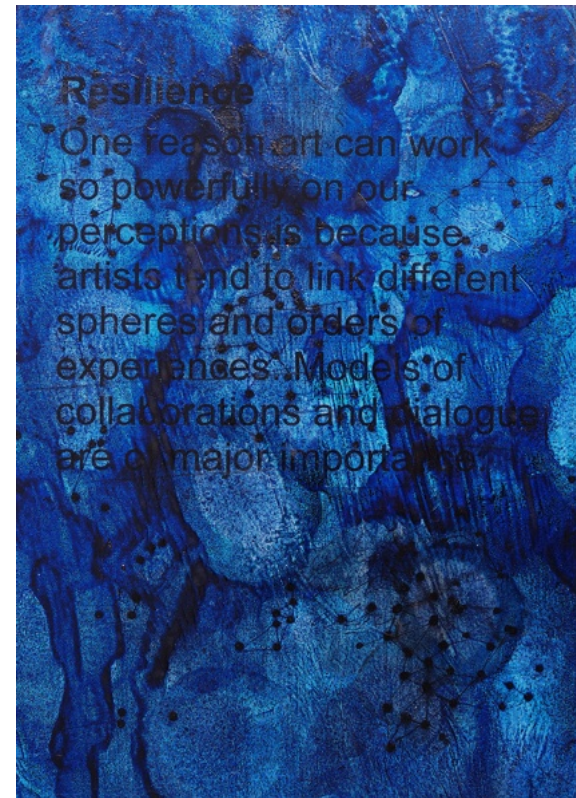
Arts and Culture Matter

Indigo, prussian blue pigment, shellac, rhatany essence, ballpoint

pencil on photocopy with text from GST

26 x 19 cm

Frame size 40 x 30 cm



George Steinmann

2016 / 2022

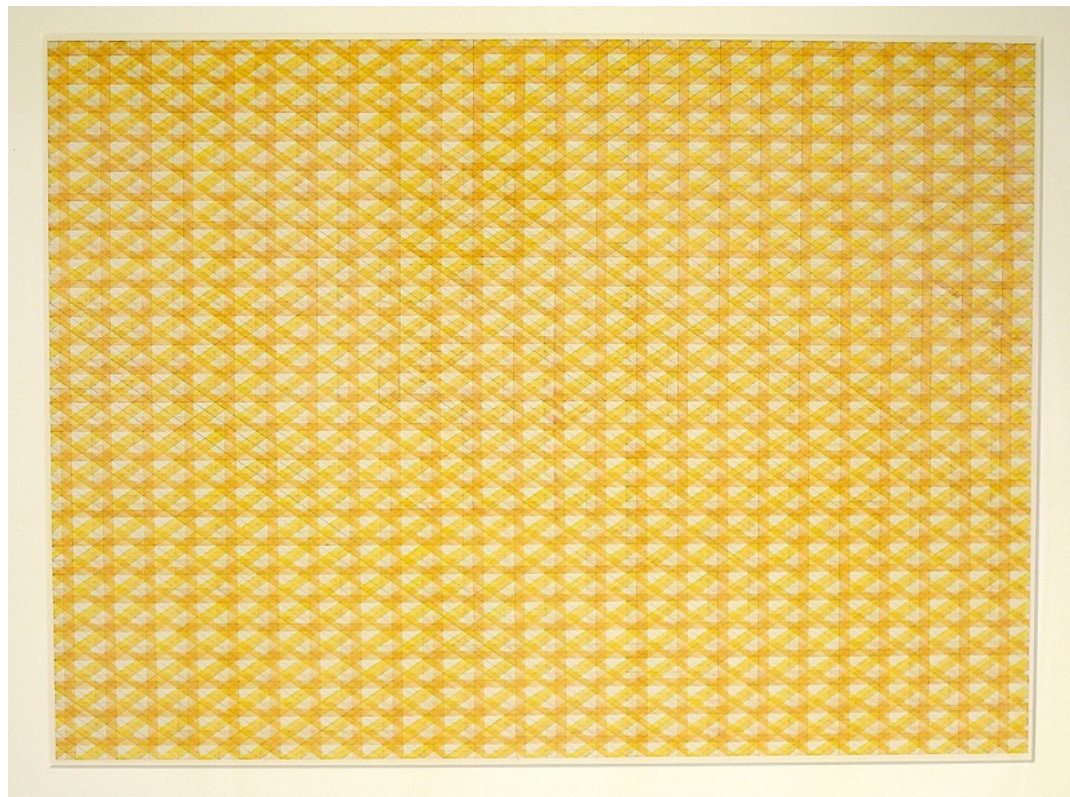
Resilience

Indigo, prussian blue pigment, shellac, rhatany essence, ballpoint

pencil on photocopy with text from GST

26 x 19 cm

Frame size 40 x 30 cm



George Steinmann

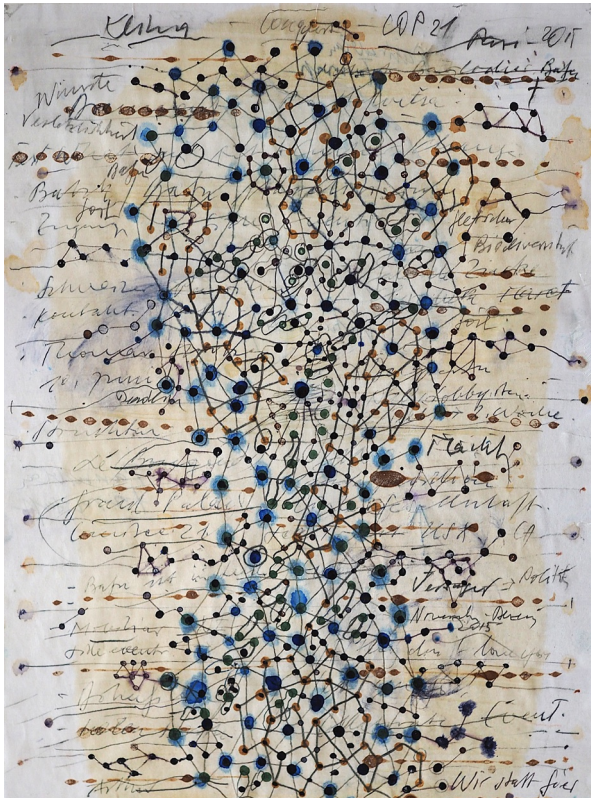
1987/2006

Indikator

Lichen juice, (*Letharia Vulpina*) Fern juice (*Polystichum*) pencil on  
handmade paper

70 x 96 cm

Frame size 91 x 117 cm



George Steinmann

2015

COP21 Paris

Prussian blue pigment, fern juice, nettle juice, shellac, indigo,

ballpoint pencil, pencil

29.5 x 21 cm

Frame size 45 x 35 cm



George Steinmann

2022

Kreislauf

Blueberry juice, fern juice, nettle juice, shellac,

Prussian blue pigment, linseed oil, rhatany essence, Bündner schist,

calcium hydroxide, ballpoint pencil, pencil

29.5 x 21 cm

Frame size 45 x 35 cm



George Steinmann

2021

New Requirements

Blueberry juice, Prussian blue pigment, indigo, Bündner schist, shellac, pencil, linseed oil on fleece

25 x 18.5 cm

Frame size 40 x 30 cm



George Steinmann

2021/2022

Rückkoppelung (Rhizom)

Blueberry juice, rhatany essence, prussian blue pigment, indigo, nettle juice, calcium hydroxide, Bündner schist

25 x 18.5 cm

Frame size 40 x 30 cm





George Steinmann

2015 / 2020

Schichten der Ähnlichkeit

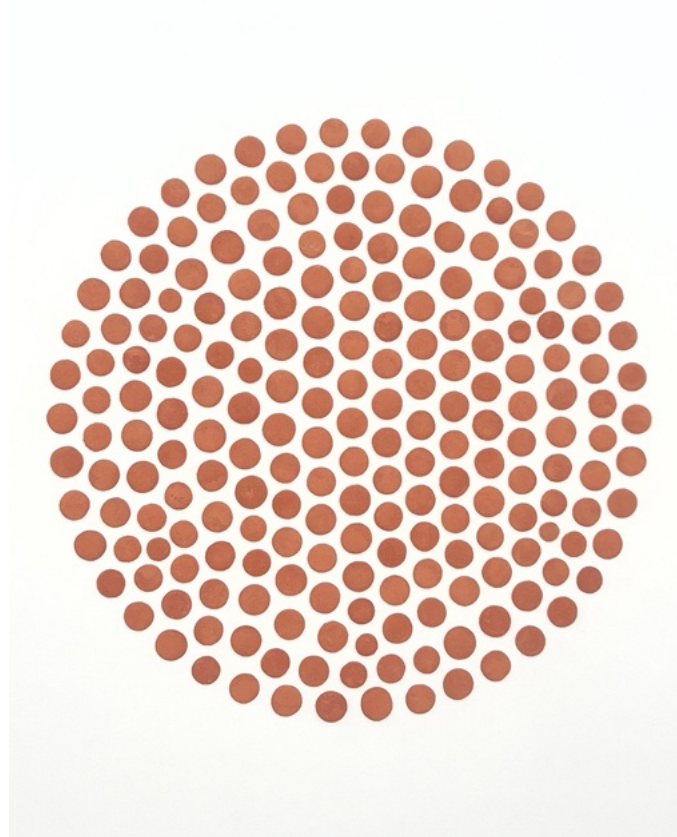
Blueberry juice, indigo, rhatany essence, calcium hydroxide,

Prussian blue pigment, ballpoint pencil

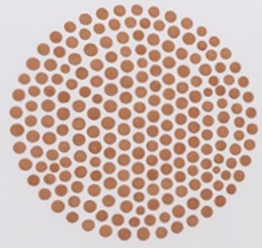
25 x 18.5 cm

Frame size 40 x 30 cm





George Steinmann  
2025  
Aquatunktur  
Quellabstanz der Mineralquelle „Carol“ Tarasap / Engadin Na-  
trium-Calcium-Hydrongencarbonat-Eisen-Säuerling  
80 x 80 x 0.5 cm





George Steinmann

1998 / 2006

Départs

Blackberry juice, (1998) shellac, copper pencil on handmade  
paper, cut

44 x 31.7 cm

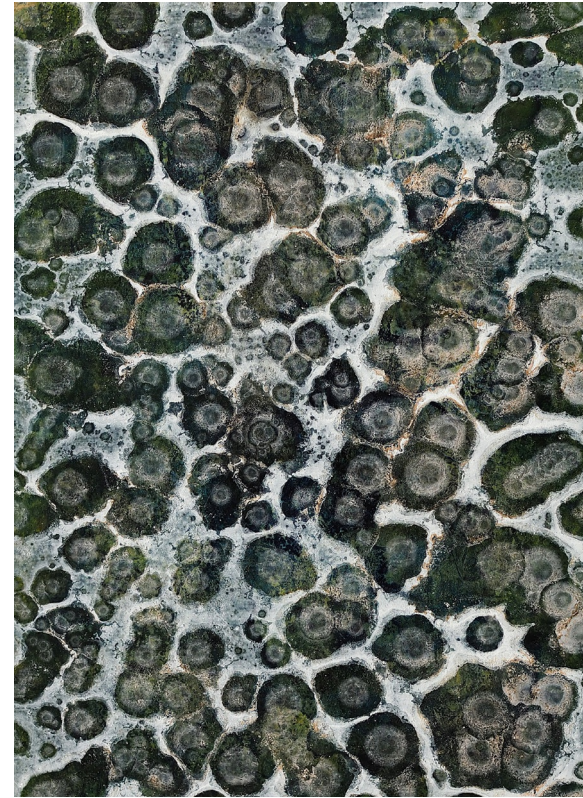
Frame size 60 x 50 cm





George Steinmann  
2017 / 2018

Umpolung (Universal Human Rights Article 27)  
Blueberry juice, indigo, Paris blue pigment, Helio true yellow pigment, tempera, ballpoint pencil, calcium hydroxide (Val S-Charl)  
29.4 x 20.8 cm  
Frame size 50 x 40 cm



George Steinmann  
2015 / 2021

Kunst als Rhizom  
Blueberry juice, acid yellow pigment, shellac, ballpoint pencil, calcium hydroxide, rhatany essence  
29.5 x 21 cm  
Frame size 50 x 40 cm





George Steinmann

2017 / 2021

Den Reichen geht die Natur aus

Blueberry juice, Prussian blue pigment, indigo, fern juice, acid yellow pigment, shellac, calcium hydroxide, ballpoint pencil

29.8 x 21 cm

Frame size 50 x 40 cm







Sedum Wilda

Drying...  
Urea...  
K...

Wunder...  
Drying...  
2020



## George Steinmann

Born 1950 in Bern, Switzerland.

Lives and works in Bern, Switzerland

Active in the blues scene since 1966. The musical practice grows alongside the visual work and reaches international stages. Tours and festival appearances include projects with a dedicated band. Collaborations feature Mike Henderson, Margie Evans, Katie Webster and Grammy winner Johnny Copeland.

### Education

1976 - 1978 Study of painting with Franz Fedier at the Hochschule für Gestaltung und Kunst in Basel

1978–1980 Study of painting with Robert Hudson and Mary Heilmann,

African American Studies with Angela Davis

Native American History with Carol Lee Sanchez at the San Francisco Art Institute.

## Selected Solo Exhibitions

- 2024 Lofty Dryness. A growing sculpture, Kunsthalle Bern (CH)
- 2021 FUTURE NOW, Stadtgalerie, Bern (CH)  
Die Alpen und das Valley, Kunsthaus Interlaken (CH)
- 2017 Kunst und Nachhaltigkeit Vol. 7, Schweizerische Mobiliar Generaldirektion, Bern (CH)
- 2014 Call and Response, Kunstmuseum Thun (CH)
- 2012 Das gelbe Gerüst, NAIRS – Zentrum für Gegenwartskunst, Scuol (CH)
- 2007 Blue Notes, Helmhaus, Zürich (CH)  
Mittendrin am Rande, Galerie Heike Strelow, Frankfurt am Main (D)
- 2000 Metalog, Max-Planck-Institut für molekulare Zellbiologie und Genetik, Dresden (D)
- 1995 Ruumi naasmine, Kunsthalle Tallinn (EE)
- 1989 Hagaldom: The fossile Age, Pori Art Museum (FI)

## Selected Group Exhibitions

- 2024      The Mountain Touch / Soul of Remedies, MUSE – Museo delle Scienze, Trento (IT)  
Blues for the Glaciers, Aargauer Kunsthaus, Aarau (CH)
- 2023      Transformationen, Museum Franz Gertsch, Burgdorf (CH)
- 2022      Mountain Touch / Soul of Remedies, Museo Nazionale della Montagna, Turin (IT)  
Balance. 1970–1990: Kunst–Gesellschaft–Umwelt, Kunstmuseum Solothurn (CH)
- 2021      Future Memories: Utopia, Dystopia, Nature, Run Run Shaw Centre, City University of  
Hong Kong (HK)
- 2020      Critical Conditions, The Story of Mind Festival, Mumbai (IN)  
Emma Kunz und Gegenwartskunst, Kunsthalle Appenzell (CH)
- 2019      Symbioses of Responsibility, Riverside Art Museum, Peking (CN)
- 2016      About Trees, Zentrum Paul Klee, Bern (CH)  
Die Kräfte hinter den Formen, Taxispalais – Kunsthalle Tirol, Innsbruck (AT) /  
Kunstmuseum Thun (CH) / Haus Lange-Haus Esters, Kunstmuseen Krefeld (D)
- 2012      Komi, a growing Sculpture, LACE Kunsthalle, Los Angeles (US)  
Chaos in Art and Science, ERES Stiftung, München (D)

## Research

- 2020 Guest lectureship, Institute of Art History, University of Bern CH
- 2017 Mandate from the Swiss Academy of Sciences SCNAT as Artistic Observer at the UN COP23 Climate Conference in Bonn DE
- 2012–2015 Research project “Vilm”, Zurich University of the Arts CH and Rügen DE
- 2015 Mandate from the Federal Department of Foreign Affairs FDFA as Artistic Observer at the COP21 Climate Conference in Paris FR
- 2001–2009 Guest lectureship in transdisciplinarity, Bern University of the Arts CH
- 1997–2007 Mandate from the Swiss Agency for Development and Cooperation SDC in Komi, research focus on sustainable forestry in the taiga RU
- 1988–1990 Founding curator, Center for Contemporary Art NAIRS, Scuol CH

## Awards

2018	Grand Cultural Prize, City of Thun CH
2017	Prix Visarte Switzerland for public art CH
2011	Honorary Doctorate, Faculty of Humanities, University of Bern CH
2001	Grand Prix Meret Oppenheim, Federal Office of Culture CH
1996	Kristjan Raud Art Prize, Tallinn EST
1988/1989	Swiss Art Scholarship today Swiss Art Award, Federal Office of Culture CH

Image rights:

Exhibition images © Wolfgang Günzel

All other image rights are held by the artists and Galerie Heike Strelow.

GALERIE  
HEIKE  
STRELOW

GALERIE HEIKE STRELOW  
Lange Straße 31  
D-60311 Frankfurt am Main  
+49 (0) 69-48 00 544-0  
[info@galerieheikestrelow.de](mailto:info@galerieheikestrelow.de)  
[www.galerieheikestrelow.de](http://www.galerieheikestrelow.de)